



HAWAII PAPAYAS



National Agricultural Statistics Service
 USDA, Hawaii Field Office
 1428 S. King Street
 Honolulu, HI 96814-2512
 Telephone: (808) 973-9588
 FAX: (808) 973-2909
 Internet Web Site <http://www.nass.usda.gov/hi>

Frequency: Monthly

Release: August 16, 2007

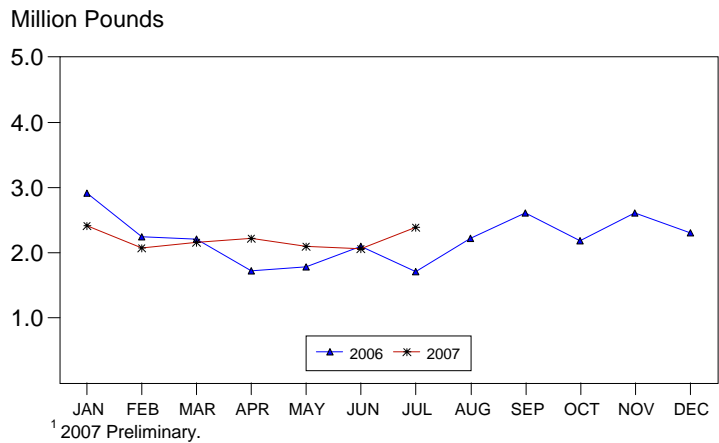
JULY FRESH PAPAYA HIGHER

Hawaii fresh papaya utilization is estimated at 2.4 million pounds for July 2007, up 16 percent from last month and 40 percent higher than the same month a year ago. Year-to-date sales for the first seven months of 2007 posted 15.4 million pounds, 5 percent above the comparable period in 2006.

Warm summer weather continued in July, encouraging flowering and fruit set. Tropical Depression Cosme and a weak shear line brought welcomed showers to the State. Normal farming activities were underway. Harvesting was steady. Growers were preparing fallowed fields for new plantings. Wild pig damage and Papaya Ringspot Virus were still affecting some orchards.

Papaya growers are expected to receive an estimated 47.0 cents per pound for fresh fruit in July, 10 percent (5.0 cents) lower than June, but unchanged from a year ago.

**PAPAYA: Fresh Utilization,
State of Hawaii, 2006-2007 ¹**



FRESH PAPAYA UTILIZATION, STATE OF HAWAII, MONTH OF: July 2007

County	Sales				Year ago	Year-to-date	
	Local ¹	Intrastate	Out-of-State	Total fresh		2006	2007
	<i>1,000 pounds</i>						
Hawaii.....	100	1,300	725	2,125	1,520	13,160	13,955
Honolulu/Kauai/Maui ²	158	17	85	260	185	1,520	1,460
State.....	258	1,317	810	2,385	1,705	14,680	15,415

¹ On island of production.

² Kauai and Maui combined with Honolulu to avoid disclosure of individual operations.

ADDENDUM

This is an addendum to the original publication. Additional pages 3-7 were added.

PAPAYA ACREAGE, STATE OF HAWAII, 2007 WITH COMPARISONS

County	Total acreage in crop							
	March		June		September		December	
	2006	2007	2006	2007	2006	2007	2006	2007
Hawaii.....	1,850	1,750	1,575	1,540	1,965		2,170	
Honolulu/Kauai/Maui ¹	220	185	170	195	175		180	
State.....	2,070	1,935	1,745	1,735	2,140		2,350	

Hawaii.....	1,620	750	1,385	675	1,205		1,025	
Honolulu/Kauai/Maui ¹	165	120	125	125	120		110	
State.....	1,785	870	1,510	800	1,325		1,135	

¹ Kauai and Maui combined with Honolulu to avoid disclosure of individual operations.

FRESH PAPAYA FARM PRICE, STATE OF HAWAII, 2006-2007

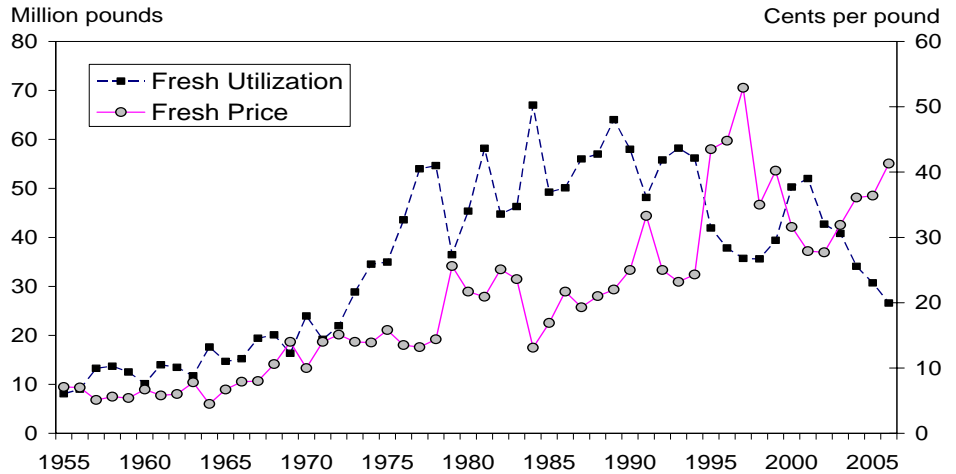
Year	Jan.	Feb.	Mar.	Apr.	May	June	July	Aug.	Sep.	Oct.	Nov.	Dec.	Average
	<i>Cents per pound</i>												
2006	34.1	36.5	42.1	46.3	51.5	47.1	47.0	48.1	38.6	38.1	38.3	36.4	41.3
2007 ¹	38.0	41.0	47.0	48.0	49.0	52.0	47.0						

¹ Preliminary.

2006 Papaya Output Down

In 2006, papaya output totaled 28.7 million pounds, down 13 percent from 2005 and falling for the fifth consecutive year. Weather for 2006 had a mixture of wet and dry conditions. Continuous rain fell during mid-February until early April causing soil erosion, flooding, disease outbreaks, and fruit and tree losses in orchards across the State. It also delayed normal field routines including planting schedules.

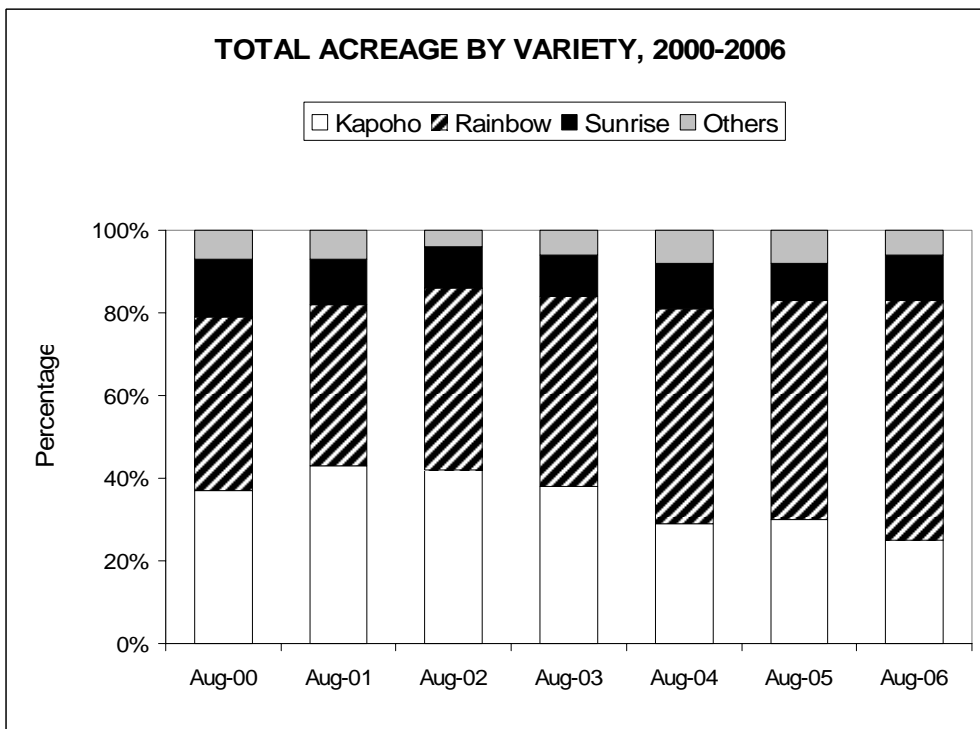
FRESH PAPAYA UTILIZATION & PRICE, STATE OF HAWAII, 1955-2006



The biotechnology variety Rainbow made up 58 percent of total acres in 2006, up 9 percent from 2005. Rainbow is resistant to Papaya Ringspot Virus (PRV), a virus that devastated the Hawaii papaya industry from 1993 to 1999. The Kapoho variety was the standard for the papaya industry for many years; however, Kapoho is susceptible to PRV. Yields of Rainbow are higher during the first year of harvest compared to the Kapoho variety. In the second year of harvest, yields for Rainbow are comparable to the Kapoho variety. Routine field inspections and rogueing of infected trees kept losses to PRV light. The Kapoho variety comprised 25 percent of total acreage compared to 30 percent the previous year. Annual August surveys since year 2000 show Rainbow and Kapoho have been the major two varieties.

The State's in crop papaya acreage totaled 2,095 down 13 percent from the previous year. Harvested acreage rose 3 percent from 2005 to 1,530 acres, up for the second year.

TOTAL ACREAGE BY VARIETY, 2000-2006



In 2006, the number of farms totaled 168, declining 19 percent from the 2005.

Hawaii County continues to lead with papaya production and accounting for the majority of the State's total.

Value of utilization (fresh and processed) for 2006 was pegged at \$11.0 million, 2 percent below 2005. Papaya price of 38.5 cents per pound increased 4.3 cents above last year average.

Papayas: Acreage, utilization, farm price and value, State of Hawaii, 1946-2006

Year	Farms	Production area	Utilization			Farm Price			Value of sales
			Processed	Fresh Mkt	All	Processed	Fresh Mkt	All	
		<i>Acres</i>	<i>----- 1,000 pounds -----</i>			<i>----- Cents per pound -----</i>			<i>\$1,000</i>
1946		360			7,565			3.2	241
1947		330			5,525			5.4	296
1948		400			7,100			4.3	303
1949		360			5,885			6.0	351
1950		460			6,450			4.2	270
1951		370			5,740			4.8	273
1952		320			7,005			5.7	397
1953		410			9,155			4.7	431
1954		470			10,785			5.2	556
1955		410	1,259	8,076	9,335	2.0	7.1	6.4	601
1956		430	1,746	8,989	10,735	2.1	7.0	6.2	661
1957		540	1,081	13,247	14,328	3.1	5.1	5.0	714
1958	226	610	1,300	13,682	14,982	2.3	5.6	5.3	797
1959	189	570	1,715	12,528	14,243	2.2	5.4	5.0	714
1960	176	500	1,815	10,130	11,945	2.4	6.7	6.0	719
1961	185	570	1,538	13,956	15,494	2.5	5.8	5.5	849
1962	161	540	738	13,472	14,210	2.5	6.0	5.8	826
1963	181	460	2,350	11,725	14,075	6.0	7.8	7.5	1,053
1964	197	750	4,266	17,614	21,880	5.8	4.5	4.7	1,032
1965	200	790	3,237	14,698	17,935	4.1	6.5	6.0	1,084
1966	139	600	3,455	15,225	18,680	3.7	7.9	7.1	1,334
1967	125	760	3,452	19,394	22,846	4.2	8.0	7.4	1,691
1968	120	830	3,465	20,085	23,550	3.9	10.6	9.6	2,260
1969	132	850	2,898	16,337	19,235	3.6	14.0	12.4	2,385
1970	139	1,040	1,022	23,938	24,960	3.9	10.0	9.8	2,436
1971	153	970	1,553	19,172	20,725	3.3	14.0	13.2	2,736
1972	179	985	3,776	21,959	25,735	2.9	15.1	13.3	3,423
1973	176	1,430	3,976	28,848	32,824	3.5	14.0	12.7	4,180
1974	181	1,690	2,695	34,529	37,224	3.1	13.9	13.1	4,871
1975	173	1,840	4,944	34,952	39,896	3.0	15.8	14.2	5,668
1976	178	1,930	6,449	43,588	50,037	3.8	13.5	12.3	6,134
1977	186	2,155	9,561	53,987	63,548	4.7	13.2	11.9	7,565
1978	183	2,190	9,376	54,624	64,000	4.6	14.4	13.0	8,304
1979	194	2,210	4,569	36,446	41,015	4.0	25.6	23.2	9,515

Continued on page 5

Papayas: Acreage, utilization, farm price and value, State of Hawaii, 1946-2006 -- Continued

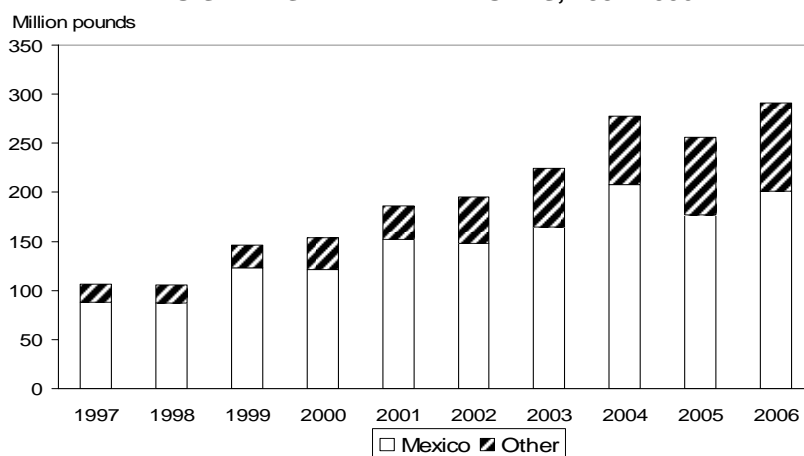
Year	Farms	Production area	Utilization			Farm Price			Value of sales
			Processed	Fresh Mkt	All	Processed	Fresh Mkt	All	
		<i>Acres</i>	<i>----- 1,000 pounds -----</i>			<i>----- Cents per pound -----</i>			<i>\$1,000</i>
1980	197	1,950	3,556	45,360	48,916	3.4	21.7	20.4	9,964
1981	211	2,110	8,220	58,170	66,390	3.1	20.9	18.7	12,413
1982	214	2,170	7,980	44,770	52,750	3.1	25.1	21.8	11,484
1983	227	2,120	15,100	46,300	61,400	4.4	23.6	18.9	11,591
1984	306	2,590	13,500	67,000	80,500	3.1	13.1	11.4	9,196
1985	315	2,650	11,150	49,250	60,400	2.3	16.9	14.2	8,579
1986	311	2,355	10,900	50,100	61,000	2.3	21.7	18.2	11,123
1987	293	2,350	11,000	56,000	67,000	2.2	19.3	16.5	11,050
1988	305	2,300	12,000	57,000	69,000	3.2	21.0	17.9	12,354
1989	325	2,500	10,000	64,000	74,000	3.0	22.0	19.4	14,380
1990	311	2,400	10,500	58,000	68,500	2.9	25.0	21.6	14,805
1991	271	2,025	7,200	48,150	55,350	2.7	33.3	29.3	16,228
1992	259	2,415	15,500	55,800	71,300	3.0	25.0	20.2	14,415
1993	256	2,555	5,500	58,200	63,700	3.1	23.2	21.5	13,673
1994	256	2,200	5,800	56,200	62,000	3.0	24.3	22.3	13,831
1995	244	2,435	8,900	41,900	50,800	3.0	43.5	36.4	18,494
1996	281	1,835	4,000	37,800	41,800	3.0	44.8	40.8	17,054
1997	241	1,985	3,100	35,700	38,800	3.0	52.9	48.9	18,978
1998	262	2,120	4,300	35,600	39,900	3.0	35.0	31.6	12,589
1999	222	1,940	3,000	39,400	42,400	3.0	40.2	37.6	15,929
2000	236	1,650	4,250	50,250	54,500	3.0	31.6	29.4	16,007
2001	221	1,950	3,000	52,000	55,000	3.0	27.9	26.5	14,598
2002	164	1,720	3,200	42,700	45,900	3.0	27.7	26.0	11,924
2003	163	1,565	1,800	40,800	42,600	3.0	31.9	30.7	13,069
2004	207	1,235	1,700	34,100	35,800	3.0	36.1	34.5	12,361
2005	207	1,480	2,200	30,700	32,900	3.0	36.4	34.2	11,241
2006	168	1,530	2,100	26,600	28,700	3.0	41.3	38.5	11,049

U.S. Papaya Imports Higher

Fresh papaya imports from foreign sources into the United States totaled 291.4 million pounds in 2006, up 14 percent from the previous year, according to the Department of Commerce. Mexico accounted for 201.0 million pounds or 69 percent of the total. Imports from Belize have steadily increased and contributed 26 percent of the total imports in 2006.

Total imports by type for 2006 increased 14 percent from 2005 to 308.6 million pounds due to more fresh papayas. Fresh imports continued to account for the majority or 94 percent of total imports.

U.S. FRESH PAPAYA IMPORTS, 1997-2006



U.S. Imports of fresh papaya, by country, 2002-2006

Country	2002	2003	2004	2005	2006
<i>Million pounds</i>					
Mexico	147.6	164.5	207.7	176.8	201.0
Belize	24.3	34.7	53.4	61.1	74.7
Brazil	12.8	15.8	10.7	10.1	8.1
Jamaica	4.2	3.3	2.2	2.3	2.9
Dominican Republic	5.3	5.5	2.6	2.4	2.2
Guatemala	.7	.8	.9	2.7	2.2
Other	.3	*	.3	.5	.3
Total	195.2	224.6	277.8	255.9	291.4

* = Less than 100,000 pounds.

U.S. Imports of papaya, by type, 2002-2006

Type	2002	2003	2004	2005	2006
<i>Million pounds</i>					
Fresh	195.2	224.6	277.8	255.9	291.4
Frozen	1.5	1.5	2.1	2.7	2.7
Dried	3.5	4.9	3.9	4.0	3.3
Paste & Puree	.1	.1	.1	.8	.5
Pulp	.6	1.1	1.2	1.1	1.4
Other	7.0	7.4	7.1	7.4	9.4
Total ¹	207.9	239.6	292.3	271.8	308.6

¹ Total may not add due to rounding.

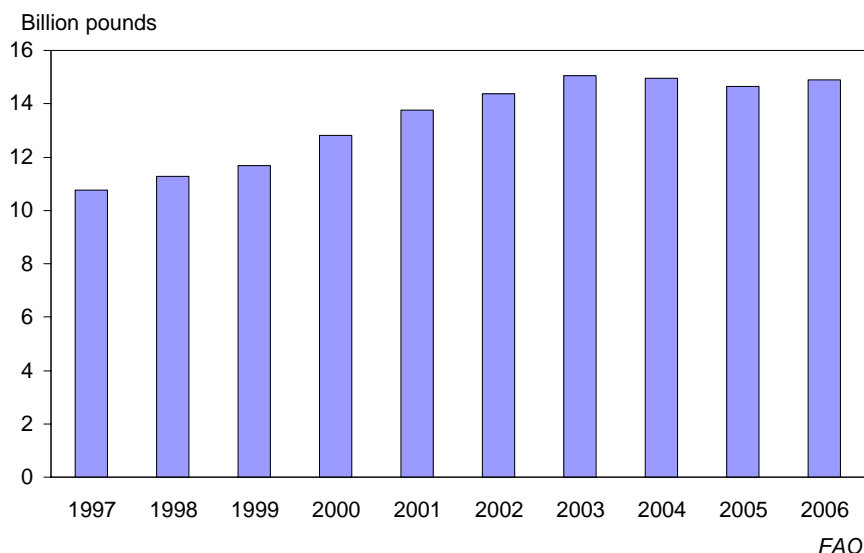
Source: U.S. Department of Commerce, Bureau of the Census.

World Papaya Production Up 2 Percent

World papaya production totaled 14.9 billion pounds in 2006, up 2 percent from a year ago, according to the Food and Agriculture Organization.

Brazil remained the top producer of papayas growing 3.5 billion pounds. Rounding out the top five producers world wide are Nigeria with 1.8 billion pounds, Mexico with 1.8 billion pounds, India with 1.7 billion pounds, and Indonesia with 1.4 billion pounds.

WORLD PAPAYA PRODUCTION, 1997-2006



World papaya production, by country, 2002-2006

Country	2002	2003	2004	2005	2006
	<i>Million pounds</i>				
Brazil	3,522	3,780	3,555	3,470	3,470
Congo, Dem Republic of	464	468	472	476	480
Ethiopia	498	508	544	571	571
India	1,543	1,543	1,655	1,727	1,727
Indonesia	1,334	1,382	1,615	1,426	1,426
Mexico	1,932	2,107	1,736	1,564	1,776
Nigeria	1,664	1,664	1,773	1,839	1,839
Thailand	265	276	276	289	289
USA	46	43	36	33	29
Other	3,102	3,283	3,284	3,255	3,290
Total ¹	14,371	15,054	14,946	14,649	14,896

¹ Total may not add due to rounding.

Source: Food and Agriculture Organization (FAO), FAOSTAT data, 2007

Contributions by:

MARK E. HUDSON
Director

STEVE P. GUNN
Deputy Director

REGINA W. HIDANO
Agricultural Statistician

SANDY K. NAKASONE
Statistical Assistant

NAOMI LANDGRAF
Maui County

ROBERT MIYAKE & DAVID MATTICE
Hawaii County

JUNE OKAMURA
Honolulu County & Kauai County

NASDA Enumerators