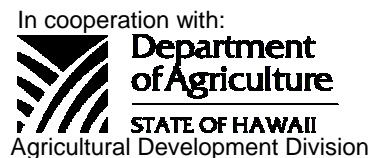




HAWAII PAPAYAS



National Agricultural Statistics Service
 USDA, Hawaii Field Office
 1428 S. King Street
 Honolulu, HI 96814-2512
 Telephone: (808) 973-9588
 FAX: (808) 973-2909
 Internet Web Site <http://www.nass.usda.gov/hi>

Frequency: Monthly

Release: June 20, 2007

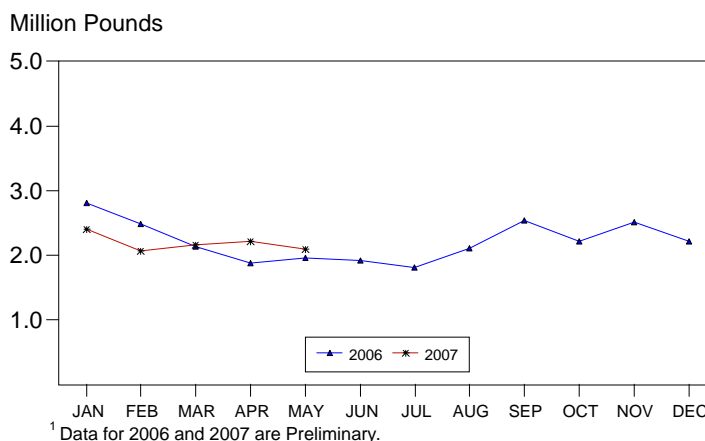
MAY FRESH PAPAYA UP FROM LAST YEAR

Hawaii fresh papaya utilization is estimated at 2.1 million pounds for May 2007, down 6 percent from April 2007, but up 18 percent from May 2006. Year-to-date utilization at 11.0 million pounds was 1 percent above the same period last year.

Sunny and dry conditions prevailed in May. Orchards benefited from warm temperatures and longer day lengths. Irrigation was stepped up to replenish low soil moisture levels. Orchards with irrigation made good progress. Fields depending upon natural rainfall, especially plantings grown in porous rocky conditions, experienced slower growth and fruit development. Fungus outbreaks were limited with drier weather. Insects, papaya ringspot virus, and wild pig damage remained concerns for some growers.

Papaya growers are expected to receive an estimated 49.0 cents per pound for fresh fruit in May, 2 percent (1.0 cent) higher than April, but 16 percent lower than (9.0 cents) May a year ago.

PAPAYA: Fresh Utilization, State of Hawaii, 2006-2007 ¹



FRESH PAPAYA UTILIZATION, STATE OF HAWAII, MONTH OF: May 2007

County	Sales				Year ago	Year-to-date	
	Local ¹	Intrastate	Out-of-State	Total fresh		2006	2007
	<i>1,000 pounds</i>						
Hawaii.....	71	1,139	650	1,860	1,600	9,750	10,030
Honolulu/Kauai/Maui ²	170	10	60	240	185	1,130	940
State.....	241	1,149	710	2,100	1,785	10,880	10,970

¹ On island of production.

² Kauai and Maui combined with Honolulu to avoid disclosure of individual operations.

PAPAYA ACREAGE, STATE OF HAWAII, 2007 WITH COMPARISONS

County	Total acreage in crop							
	March		June		September		December	
	2006	2007	2006	2007	2006	2007	2006	2007
Hawaii.....	1,850	1,750	1,575		1,965		2,170	
Honolulu/Kauai/Maui ¹	220	185	170		175		180	
State.....	2,070	1,935	1,745		2,140		2,350	
	Total bearing acres							
Hawaii.....	1,620	750	1,385		1,205		1,025	
Honolulu/Kauai/Maui ¹	165	120	125		120		110	
State.....	1,785	870	1,510		1,325		1,135	

¹ Kauai and Maui combined with Honolulu to avoid disclosure of individual operations.

FRESH PAPAYA FARM PRICE, STATE OF HAWAII, 2006-2007

Year	Jan.	Feb.	Mar.	Apr.	May	June	July	Aug.	Sep.	Oct.	Nov.	Dec.	Average
	<i>Cents per pound</i>												
2006 ¹	34.0	36.0	45.0	49.0	58.0	51.0	48.0	40.0	38.0	38.0	37.0	34.0	
2007 ¹	38.0	41.0	47.0	48.0	49.0								

¹ Preliminary.

MARK E. HUDSON
Director

STEVE P. GUNN
Deputy Director

REGINA W. HIDANO
Agricultural Statistician

SANDY K. NAKASONE
Statistical Assistant

Contributions by:

NAOMI LANDGRAF
Maui County

ROBERT MIYAKE & DAVID MATTICE
Hawaii County

JUNE OKAMURA
Honolulu County & Kauai County