



NASS
FACT FINDERS FOR AGRICULTURE
UNITED STATES DEPARTMENT OF AGRICULTURE

National Agricultural Statistics Service
1428 South King Street
Honolulu, HI 96814-2512
Telephone: (808) 973-9588
Fax: (808) 973-2909



HAWAII PINEAPPLES

Annual Summary

In cooperation with:
Department of Agriculture
STATE OF HAWAII
Agricultural Development Division

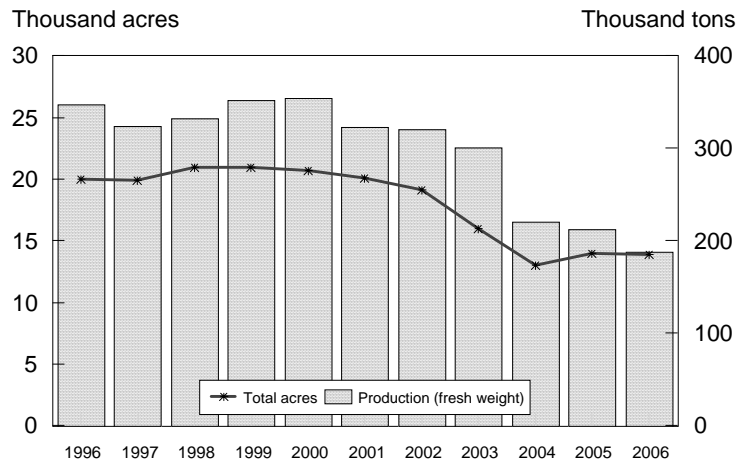
February 7, 2007

PINEAPPLE OUTPUT & VALUE DECLINE IN 2006

Hawaii pineapple utilization is estimated at 188,000 tons for 2006, declining 11 percent from the 2005 total of 212,000 tons, according to the USDA, NASS, Hawaii Field Office. Fresh sales pegged at 99,000 tons, falling 7 percent from the 2005 total of 106,000 tons. Processed utilization at 89,000 tons, dropped 16 percent below the 106,000 tons produced in 2005. Acreage totaled 13,900 acres, decreasing 100 acres from 2005.

The equivalent farm value for 2006 pineapple crop is estimated at \$75.5 million, down 5 percent from \$79.3 million in 2005. The farm-gate price of pineapple utilized as processed fruit averaged \$148 a ton, unchanged from a year ago. Fresh market sales averaged \$630 a ton, 5 percent above the 2005 price.

PINEAPPLES: Production and acreage
State of Hawaii, 1996-2006



A large operation made public its intentions to stop planting pineapples in Hawaii last February and had expected to continue until 2008 but ended its operation in 2006.

PINEAPPLES: Number of farms, acreage, production, disposition, price, and value, State of Hawaii, 2002-2006

Year	Farms ¹	Acreage used for crop	Production (fresh weight)	Disposition		Farm price		Value of production (fresh weight)
				Processed (fresh weight)	Fresh market	Processed ²	Fresh market ³	
	<i>Number</i>	<i>1,000 acres</i>		<i>1,000 tons</i>		<i>Dollars per ton</i>		<i>Thousand dollars</i>
2002	25	19.1	320	203	117	136	624	100,616
2003	25	16.0	300	170	130	135	604	101,470
2004	30	13.0	220	116	104	148	634	83,104
2005	30	14.0	212	106	106	148	600	79,288
2006	30	13.9	188	89	99	148	630	75,542

¹ Includes large and small pineapple growers statewide.

² Estimate to reflect value of fresh fruit delivered processing plant door based on average contract prices of independent growers.

³ Estimate to reflect value at wholesale establishments for local sales and shipper dock for mainland and foreign sales.

PINEAPPLES: Value of fresh market and processed utilization, State of Hawaii, 2002-2006

Year	Fresh market sales ¹		Processor value of canned fruit and juice production ³	Total value: Fresh market and processed ⁴
	Quantity	Value ²		
	----- 1,000 tons -----		----- Million dollars -----	
2002	117	73.0	71.0	144.0
2003	130	78.5	64.4	142.9
2004	104	65.9	57.3	123.2
2005	106	63.6	49.8	113.4
2006	99	62.4	*	*

* = Available in July. ¹ Includes "fresh cut". ² Value FAS shipping point for outshipments, delivered wholesalers local sales for 2001-2004. ³ Value of canned fruit and juices and by-product shipped out-of-State and sold within State. ⁴ Pineapple Growers Association of Hawaii for 2001-2003.

MARK E. HUDSON
Director

REGINA W. HIDANO
Agricultural Statistician

STEVE P. GUNN
Deputy Director

SANDY K. NAKASONE
Statistical Assistant