



Hawaii Monthly Livestock Review

National
Agricultural
Statistics
Service

March 8, 2007

In Cooperation with the Hawaii Department of Agriculture

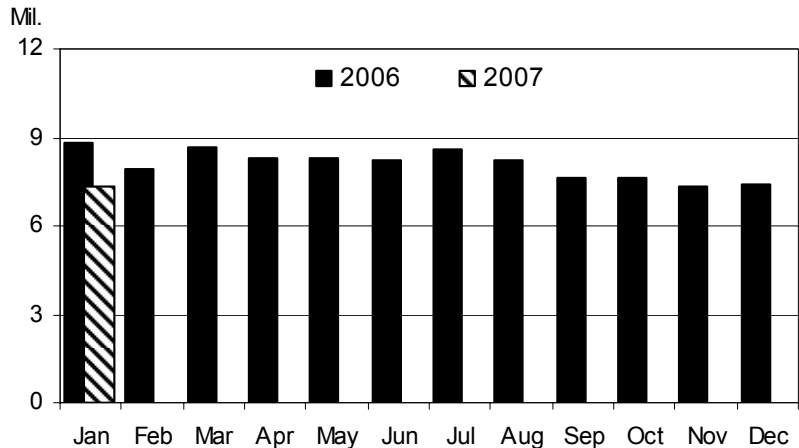
Hawaii Field Office · 1428 South King Street · Honolulu, HI 96814-2512 · (808) 973-9588 · www.nass.usda.gov

CONTENTS		Page
Poultry		
<i>Number of layers, rate of lay, and total eggs.....</i>		1
Cattle		
<i>Total marketings and exports.....</i>		2
<i>Commercial slaughter.....</i>		3
Hogs		
<i>Commercial slaughter.....</i>		3
Pasture and livestock conditions		
<i>County summaries.....</i>		4
Dairy		
<i>Number of milk cows, milk per cow, and total milk production....</i>		5
Farm prices		
<i>Farm prices for selected livestock commodities.....</i>		6
U.S. livestock roundup		
<i>Latest national estimates and outlook reports.....</i>		7-8

January Egg Production Down 17 Percent From A Year Ago

Hawaii egg production totaled 7.3 million (20,278 cases) in January 2007, down 17 percent from January 2006. The average number of layers on hand during January 2007 was estimated at 404,000, down 1 percent from December and down 15 percent from January 2006. The average rate of lay during January 2007 was 1,807 per 100 layers (58.3 percent rate of lay), down 2 percent from January 2006. ■

Monthly Eggs: Total eggs produced, State of Hawaii, 2006 and 2007



EGGS: Number of layers, rate of lay, and production, State of Hawaii, January 2007 and year-to-date totals with comparisons.

County	Number of layers on hand during month			Rate of lay per 100 layers		Total eggs produced			
	Jan. 2006	Dec. 2006	Jan. 2007	Jan. 2006	Jan. 2007	Jan. 2006	Jan. 2007	Year-to-date	
								2006	2007
State ^{1/}	478.0	409.0	404.0	1,841	1,807	8.80	7.30	8.80	7.30

-----thousands----- -----eggs----- -----millions-----

^{1/} County data series discontinued.

Mark Hudson, Director
Steve Gunn, Deputy Director

Ron Nakamura, Nils Morita, Research Statisticians
Karen Lee and Joyce Jay, Statistical Assistants

Total Cattle Marketings and Exports

January Cattle Marketings Down 3 Percent From 2006

Total cattle marketings for January 2007 is estimated at 5,900 head, down 3 percent from January 2006. ■

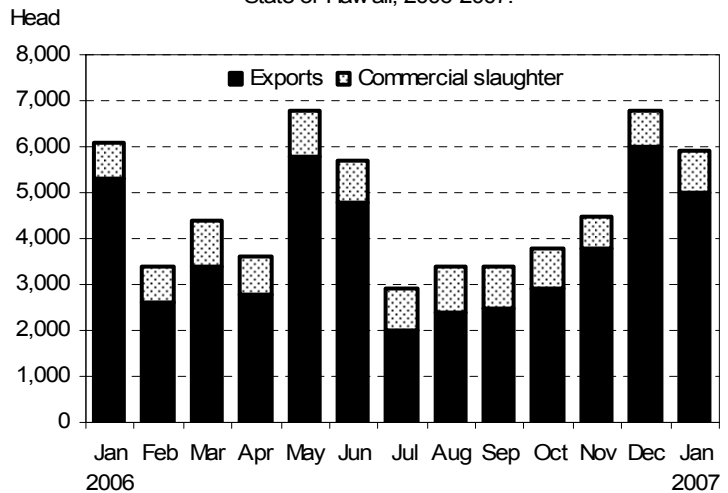
January exports down 6 percent from year ago

Exports of steers and heifers totaled 5,000 head in January 2007, down 6 percent from a year ago. A breakdown of the exports shows that both categories experienced a decline in January. Steers accounted for 60 percent of January 2007's export total with 3,000 head, down 3 percent from January 2006. Exports of heifers totaled 1,900 head in January 2007, down 14 percent from last January. Exports of other classes of cattle were not included. ■

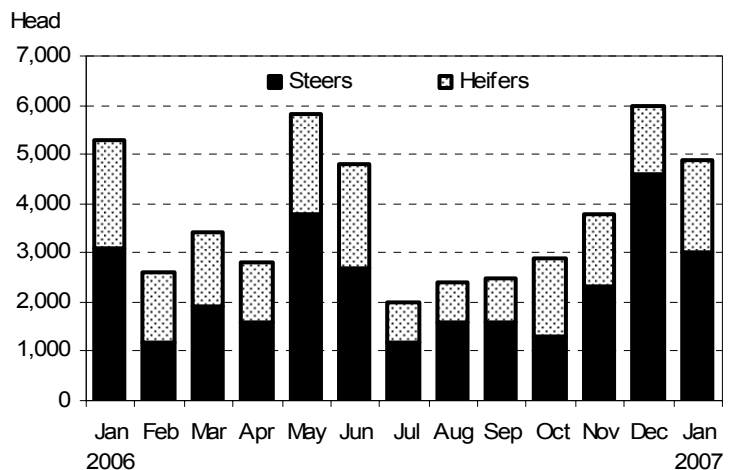
Average live weight up 4 percent

The average live weight of steers and heifers exported from Hawaii in January 2007 was 421 pounds, up 4 percent or 15 pounds from a year ago. ■

Monthly Cattle Marketings: Number of head by type,
State of Hawaii, 2006-2007.



Monthly Cattle Exports: Number of head by type,
State of Hawaii, 2006-2007.



Cattle: Total marketings, exports by type, and average live weight of exports,
State of Hawaii, January 2007 and year-to-date comparison.

Month	Total marketings ^{1/}		Exports by type ^{2/}						Average live weight	
			Steers		Heifers		Total ^{3/}			
	2006	2007	2006	2007	2006	2007	2006	2007	2006	2007
January	6,100	5,900	3,100	3,000	2,200	1,900	5,300	5,000	406	421
Year-to-date ^{4/}	6,100	5,900	3,100	3,000	2,200	1,900	5,300	5,000	406	421

^{1/} Sum of commercial slaughter and exports. Total may not add due to rounding.

^{2/} Cattle and calves shipped out-of-State are classified as steers and heifers; all other classes of animals are not included. Annual totals for all classes of exports are available in the *Statistics of Hawaiian Agriculture* yearbook.

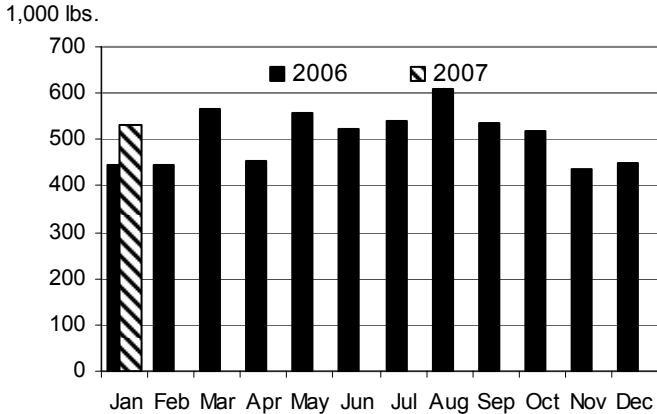
^{3/} Steers and heifers may not add to total due to rounding.

^{4/} Includes any revisions made to previous months.

Cattle and Hogs Commercial Slaughter

Monthly Commercial Beef Production:

Total Dress Weight, State of Hawaii, 2006 and 2007

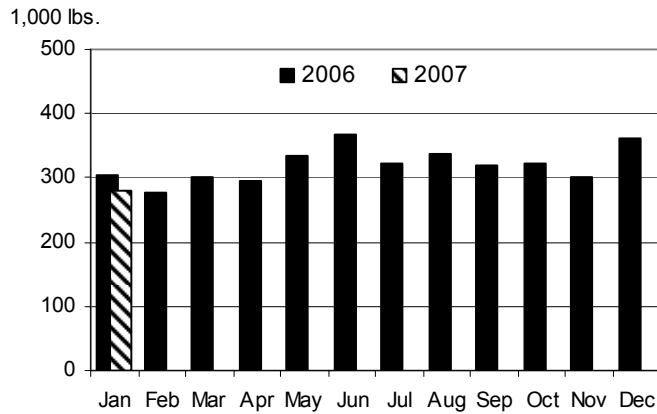


Commercial Beef Production Up 19 Percent

Hawaii commercial beef production (local slaughter) during January 2007 totaled 533,000 pounds, up 19 percent from January 2006. Commercial kill totaled 900 head in January, up 13 percent from the January 2006's total of 800 head. Average live weight per head increased to 1,079 pounds in January 2007, 6 percent heavier than in January 2006. ■

Monthly Commercial Pork Production:

Total Dress Weight, State of Hawaii, 2006 and 2007



Commercial Pork Production Down 8 Percent

Hawaii commercial pork production during January 2007 totaled 281,000 pounds, down 8 percent from January 2006. Total hog kill was 1,700 head in January 2007, down 6 percent from a year ago. Average live weight per head was 281 pounds in January 2007, down 8 percent from the 305-pound average a year ago. ■

Cattle and Hogs: Total commercial slaughter, average live weight, total live weight, And total dressed weight, State of Hawaii, January 2007 and year-to-date with comparison. ^{1/}

Month	Total commercial slaughter		Average live weight		Total live weight		Total dressed weight ^{2/}	
	2006	2007	2006	2007	2006	2007	2006	2007
Cattle	----- number of head-----		----- Pounds -----		----- 1,000 pounds -----			
January	800	900	1,019	1,079	814	970	447	533
Year-to-date	800	900	--	--	814	970	447	533
Hogs ^{3/}								
January	1,800	1,700	224	217	406	375	305	281
Year-to-date	1,800	1,700	--	--	406	375	305	281

-- Not estimated.

^{1/} Excludes non-inspected farm slaughter and live cattle and calves shipped out-of-State; includes custom slaughter.

^{2/} Estimates based on 54.9 dressing percentage for cattle and 75.0 dressing percentage for hogs.

^{3/} Excludes non-inspected farm slaughter; includes custom slaughter and live hog shipments from the mainland for slaughter.



Pasture and Livestock Conditions, February 1, 2007

Hawaii County

January Rainfall ^{1/}		
Station	2007	Normal
Honokaa	1.46	7.40
Kamuela upper	2.07	6.30
Kahuku Ranch	2.31	4.30
Puu Waawaa	0.09	3.50
Waikii	0.48	2.60

Hilo and Puna districts grass growth was slowed by cool temperatures and reduced sunlight. Overall, pastures were in generally good condition.

Ka`u district pastures were in fair to good condition. Winter weather patterns brought above normal levels of moisture to upper elevation areas. Pastures were green, but grass growth was slow. Cattle and calves were in generally good condition.

North and South Kona districts benefited from isolated showers that kept south and central pastures in generally good condition. Cooler temperatures, short daylight hours, and cloudy afternoons contributed to slower grass progress in some areas. Coastal pastures were in generally poor condition as dry weather continued throughout the month. Only dry, old feed was available for grazing. North Kona pastures did not receive any significant amounts of moisture and remained dry.

North and South Kohala districts pastures were in fair to good condition on the windward side of the Kohala Mountain and fair to poor on the leeward side. Coastal South Kohala pastures were very dry. Very dry conditions and strong winds fanned a brush fire that scorched an estimated 2,700 acres of upper South Kohala rangeland. Overall, cattle were reportedly in fair to good condition. Calves were making slower progress.

Hamakua district pastures were in fair to good condition. Cool temperatures, relatively short days, and below normal rainfall slowed grass growth during the month. Livestock was in good condition with no unusual deaths or diseases being reported.

Maui County

January Rainfall ^{1/}		
Station	2007	Normal
Hana Airport	1.49	8.50
Pukalani	0.75	4.40
Ulupalakua ranch	1.03	4.30
Molokai Airport	0.60	4.30

Maui Island:

Pasture conditions were generally fair in most areas of the island. Ulupalakua pastures benefited from showers, but cool temperatures limited re-growth. Lower elevation pastures in Ulupalakua have begun to dry-out. Kula pastures remained in fair to good condition as overcast skies helped retain soil moisture. Makawao and Haiku pastures were in fair condition. Some pastures were being grazed heavier than others. Central area pastures, mainly Waikapu toward Maalaea, received some rainfall, but not enough to allow for adequate re-growth. Pastures on the west side of the island were in fair condition where the grazing pressure appeared to be low. Regrowth was noticed in some Kahakuloa pastures, but overall conditions remained fair. Generally, livestock on Maui was in good condition. Cows and calves were in fair to good condition.

Molokai island:

Pastures on the east side benefited from passing showers. South facing pastures were not able to provide high quality feed. Upper elevation pastures of Kalae were in good

condition. Pastures in Maunaloa were able to provide a mix of dry and some green forage.

Honolulu County

January Rainfall ^{1/}		
Station	2007	Normal
Hakipuu mauka	6.04	8.70
Lualualei	1.99	4.40
Waimanalo	2.52	6.80

Rainfall remained lighter than normal at most gauges during January. Some upper elevation areas and the windward slopes of the Koolau Mountains did manage to post near- or above-normal precipitation. Pastures conditions were mostly good.

Kauai County

January Rainfall ^{1/}		
Station	2007	Normal
Kalaheo	5.41	7.10
Kapahi	4.86	8.70
Princeville airport	3.52	6.50

Most rain gages on Kauai recorded 40 to 70 percent of normal during January. In general, windward areas experienced more rainfall than leeward sections. The cool weather slowed grass growth. Livestock conditions were generally good. ■

^{1/} Rainfall stations were selected from the National Weather Service's Hydronet system of automated rain gages. Featured stations may vary each month. All rainfall data has not been quality controlled, and therefore is not certified by the National Weather Service. A complete listing of Hydronet stations, rainfall gage location maps, and other rainfall data may be found at the National Weather Service's hydrology homepage:

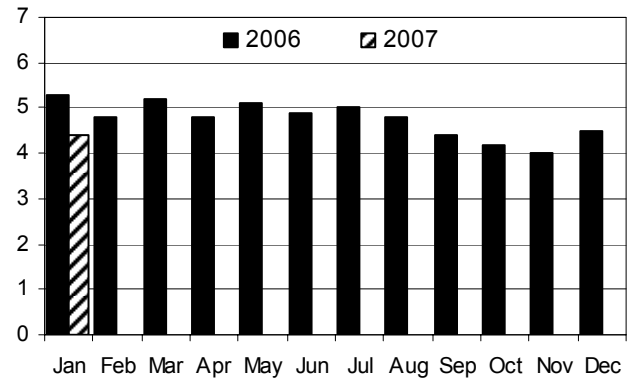
<http://www.prh.noaa.gov/hnl/pages/hydrology.php>

Milk Cows and Milk Production

January Milk Production Down 17 Percent From Year Ago

Hawaii's dairy cows produced 4.4 million pounds of milk in January 2007, down 17 percent from a year ago and down 2 percent from December 2006. ■

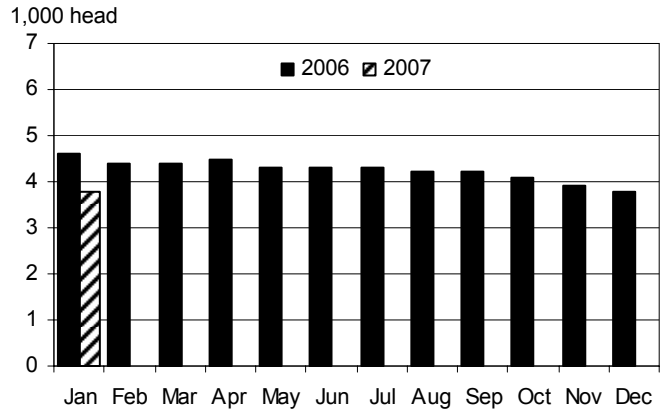
Milk: Monthly production, State of Hawaii, 2006 and 2007.
Mil. pounds



January's Cow Herd Down 17 Percent From Year Ago

Hawaii's cow herd, both dry and milking, numbered 3,800 head in January 2007, unchanged from the previous month but down 17 percent from January 2006. Average milk per cow is estimated at 1,180 pounds for January 2007, up 3 percent from last January's average of 1,150 pounds per cow. ■

Milk: Average number of cows on hand during month, State of Hawaii, 2006 and 2007.
1,000 head



Milk: All milk cows, milk per cow, and total milk production, State of Hawaii, January 2007 and year-to-date with comparisons. ^{1/}

Area	All milk cows ^{2/}			Milk per cow		Milk production			
	Jan. 2006	Dec. 2006	Jan. 2007	Jan. 2006	Jan. 2007	Jan. 2006	Jan. 2007	Year-to-date	
								2006	2007
State	4,600	3,800	3,800	1,150	1,180	5,300	4,400	5,300	4,400

----- number of head ----- ----- pounds ----- ----- 1,000 pounds -----

^{1/} Figures for 2007 are preliminary.

^{2/} Includes dry cows and cows on non-commercial dairy farms.



Average Farm Prices

Livestock Prices Higher Than Year-ago

Steers and heifers

The average dress weight farm price for steers and heifers is estimated at 99.0 cents per pound for January 2007, unchanged from December 2006. Compared to a year ago, the January 2007 average dress weight farm price was 4 cents higher.

Cows

The average dress weight farm price for cows is estimated at 54.0 cents per pound in January 2007, unchanged from December 2006. Compared to a year ago, the average dress weight farm price for cows was 3 cents per pound higher in January 2007.

Market hogs

The average dress weight farm price for market hogs is estimated at \$1.30 per pound for January 2007, up 9 cents per pound or 7 percent from December 2006. Compared to a year ago, the dressed weight for market hogs was up 15 cents per pound this January.

Milk

The average farm price for milk was \$26.80 per hundredweight during January 2007, down 1 percent from December 2006. January's farm price for milk was identical to a year ago.

Eggs

The average farm price for a dozen eggs was \$1.05 in January 2007, up 5 cents per dozen or 5 percent from December 2006. Compared to a year ago, the farm price for a dozen eggs was unchanged. ■

Livestock Commodity Farm Prices: Average farm prices for steers and heifers, cows, market hogs, milk, and eggs, State of Hawaii, January 2007 with comparisons.

Commodity	January 2006	December 2006	January 2007
	----- cents per pound -----		
Steers and heifers ^{1/}			
Dressed weight	95.0	99.0	99.0
Live weight ^{2/}	52.2	54.4	54.4
Cows ^{1/}			
Dressed weight	51.0	54.0	54.0
Live weight ^{2/}	28.0	29.6	29.6
Market hogs ^{1/}			
Dressed weight	115.0	121.0	130.0
Live weight ^{3/}	86.3	90.8	97.5
	----- dollars per 100 pounds -----		
Milk.....	26.80	27.00	26.80
	----- cents per dozen -----		
Eggs ^{4/}	105.0	100.0	105.0

^{1/} Equivalent delivered slaughterhouse for sales in county of production and delivered shipper's dock for off-island sales.

^{2/} The average live weight price for range steers, heifers, and cows is equal to the dressed weight price multiplied by a factor of 0.549.

^{3/} The average live weight price for market hogs (includes roasters) is equal to the dressed weight price multiplied by a factor of 0.75.

^{4/} Prices are for all eggs, equivalent delivered processing plant. Preliminary prices are based on processor reports from the counties of Hawaii, Kauai, and Maui. Final prices are based on processor reports from all counties.





Commercial red meat production for the United States totaled 4.09 billion pounds in January, up 5 percent from the 3.90 billion pounds produced in January 2006.

Beef production, at 2.16 billion pounds, was 6 percent above the previous year. Cattle slaughter totaled 2.80 million head, up 6 percent from January 2006. The average live weight was up 5 pounds from the previous year, at 1,290 pounds.

Veal production totaled 14.3 million pounds, 21 percent above January a year ago. Calf slaughter totaled 74,300 head, 34 percent above January 2006. The average live weight was down 31 pounds from last year, at 324 pounds.

Pork production totaled 1.90 billion pounds, 4 percent above from the previous year. Hog kill totaled 9.37 million head, 5 percent above January 2006. The average live weight was down 2 pounds from the previous year, at 271 pounds.

Lamb and mutton production, at 15.1 million pounds, was 7 percent below January 2006. Sheep slaughter

totaled 216,700 head, 3 percent below last year. The average live weight was 139 pounds, down 5 pounds from January a year ago.

U.S. egg production totaled 7.64 billion during January 2007, down 1 percent from last year. Production included 6.54 billion table eggs, and 1.10 billion hatching eggs, of which 1.03 billion were broiler-type and 67 million were egg-type. The total number of layers during January 2007 averaged 347 million, down 1 percent from last year. January egg production per 100 layers was 2,200 eggs, down slightly from January 2006.

All layers in the U.S. on February 1, 2007 totaled 347 million, down 1 percent from last year. The 347 million layers consisted of 288 million layers producing table or market type eggs, 55.7 million layers producing broiler-type hatching eggs, and 2.81 million layers producing egg-type hatching eggs. Rate of lay per day on February 1, 2007, averaged 70.7 eggs per 100 layers, down slightly from February 1, 2006.■

Excerpts from *Livestock Slaughter* (February 23, 2007) and *Chickens and Eggs* (February 27, 2007) releases.



The Economics of Food, Farming, Natural Resources, and Rural America

Feed Grains: Coarse grain supply, use and stocks projections for 2006/07 corn, barley, and oats were largely unchanged from the World Agricultural Supply and Demand Estimates published last month. Consequently, the projected farm price for corn was unchanged at \$3.00 to \$3.40 per bushel. The soybean meal price was raised \$10 on both sides to \$180 to \$195 per short ton. The next major mover in grain prices will likely be the March 30 Prospective Plantings report, the first real indicator of how corn acreage will respond to higher prices induced by growth in ethanol production.

Cattle/Beef: On February 2, USDA's National Agricultural Statistics Service released its January 1, 2006, estimates of cattle and calf inventories in its semiannual Cattle report. The report included some significant revisions of January 1, 2006, inventories, and calf crops for 2005 and 2006 were also revised downward.

Record numbers for the series beginning in 1996 of January 1 cattle on feed on 1,000-plus feedlots (Cattle on Feed report released on January 26, 2007), highest feeder cattle supplies outside feedlots since 2003, and heaviest second-half-year commercial cow slaughter since 2003 were all based on smaller total cow inventories and calf crops than previously thought. Higher corn prices are expected to prevail in 2007, exerting downward pressure on feeder cattle prices. Snowstorms and cold weather in the Plains continue to deplete cow-calf producers' hay stocks and hamper growth of feedlot cattle.

Beef and Cattle Trade: Cattle imports totaled 2.289 million head in 2006, up 26 percent from 2005, reflecting the first full calendar year of cattle imports from Canada since 2002. Beef imports in the fourth quarter totaled 722 million pounds, down 9 percent from the same period in 2005. Total 2006 beef imports were down 14 percent from 2005, reflecting high U.S.



U.S. Livestock Roundup (continued)

domestic cow slaughter in response to drought conditions, shifting export patterns among major South American exporters, and displacement of Canadian beef imports by Canadian cattle imports. U.S. beef exports totaled 1.153 billion pounds in 2006, up 65 percent from 2005, driven mainly by record exports to Mexico of 668 million pounds.

Hogs/Pork: USDA increased its estimate for first-quarter 2007 hog prices to \$44- \$46 per cwt, largely due to strong demand conditions. For the year, live equivalent prices of 51-52 percent lean hogs are expected to range between \$44 and \$46 per cwt.

Dairy: Despite slightly lower cow numbers, increased productivity is expected to boost milk production in 2007 to 184.3 billion pounds. However, buoyant demand, both foreign and domestic, will lead to sharply higher prices for milk and dairy products in 2007 compared with 2006.

Poultry: Broiler meat production in 2006 was 35.7 billion pounds, up only 1 percent from the previous year. The outlook for 2007 is for declines in production in the first half of the year, with growth picking up in second-half 2007 as stronger prices help to boost production. The production estimate for 2007 was reduced to 36

billion pounds from last month due to the continued lower numbers of chicks being placed and expected higher feed costs. Turkey meat production in 2007 is forecast at 5.78 billion pounds, up 1.7 percent from 2006. The increase in production follows 2 years of relatively strong prices for whole turkeys and most turkey products.

Sheep/Lamb: After 2 straight years of increases, sheep inventory growth was hampered by drought conditions in the Southwestern United States, especially Texas and New Mexico, and in California. The NASS Sheep and Goats report shows the inventory of all sheep and lambs decreased in 2006, down 1 percent to 6.19 million head, a 45,000-head decline from a year earlier. Breeding sheep inventory decreased fractionally from a year ago from 4.64 to 4.62 million head but the smaller 2006 lamb crop is expected to result in further production declines for 2007 with production expected at 182 million pounds. As a result, slaughter lamb prices are expected to remain strong for 2007 and average around \$83-\$87 per hundredweight (cwt).■

Excerpt from *Livestock, Dairy, & Poultry Outlook/LDP-M-152/February 20, 2007* Economic Research Service, USDA.