



Hawaii Monthly Livestock Review

National
Agricultural
Statistics
Service

October 4, 2007

In Cooperation with the Hawaii Department of Agriculture

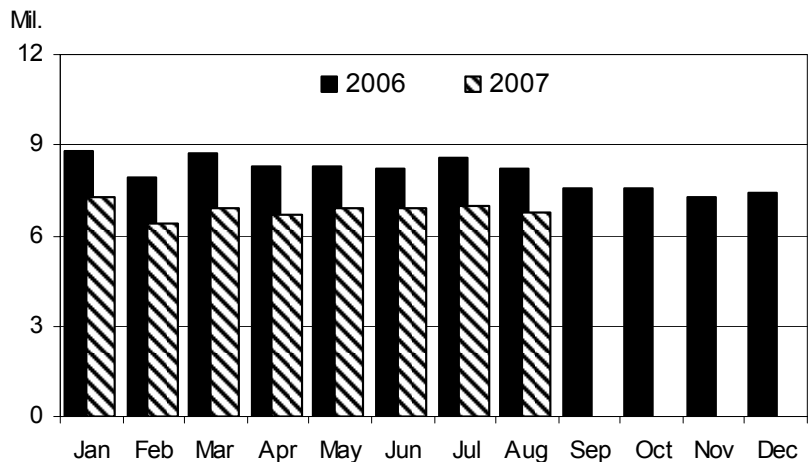
Hawaii Field Office · 1428 South King Street · Honolulu, HI 96814-2512 · 1-(800)-804-9514 · www.nass.usda.gov

August Egg Production Down 17 Percent From A Year Ago

Hawaii egg production totaled 6.8 million (18,889 cases) in August 2007, down 17 percent from August 2006. The average number of layers on hand during August 2007 was estimated at 368,000, down fractionally from July 2007 and down 14 percent from August 2006. The average rate of lay during August 2007 was 1,848 per 100 layers (59.6 percent rate of lay), down 3 percent from August 2006. ■

| CONTENTS | | Page |
|-------------------------------------------------------------------------|--|------------|
| Poultry | | |
| <i>Number of layers, rate of lay, and total eggs.....</i> | | 1 |
| Cattle | | |
| <i>Total marketings and exports.....</i> | | 2 |
| <i>Commercial slaughter.....</i> | | 3 |
| Hogs | | |
| <i>Commercial slaughter.....</i> | | 3 |
| Pasture and livestock conditions | | |
| <i>County summaries.....</i> | | 4 |
| Dairy | | |
| <i>Number of milk cows, milk per cow, and total milk production....</i> | | 5 |
| Farm prices | | |
| <i>Farm prices for selected livestock commodities.....</i> | | 6 |
| U.S. livestock roundup | | |
| <i>Latest national estimates and outlook reports.....</i> | | 7-8 |

Monthly Eggs: Total eggs produced, State of Hawaii, 2006 and 2007



EGGS: Number of layers, rate of lay, and production, State of Hawaii, August 2007 and year-to-date totals with comparisons.

| County | Number of layers on hand during month | | | Rate of lay per 100 layers | | Total eggs produced | | | |
|---------------------|---------------------------------------|-----------|-----------|----------------------------|-----------|---------------------|-----------|--------------|-------|
| | Aug. 2006 | July 2007 | Aug. 2007 | Aug. 2006 | Aug. 2007 | Aug. 2006 | Aug. 2007 | Year-to-date | |
| | | | | | | | | 2006 | 2007 |
| State ^{1/} | 429.0 | 369.0 | 368.0 | 1,911 | 1,848 | 8.20 | 6.80 | 67.00 | 54.90 |

-----thousands----- -----eggs----- -----millions-----

^{1/} County data series discontinued.

Mark Hudson, Director
Steve Gunn, Deputy Director

Ron Nakamura, Nils Morita, Research Statisticians
Karen Lee and Joyce Jay, Statistical Assistants

Total Cattle Marketings and Exports

August Cattle Marketings Up 12 Percent From 2006

Total cattle marketings for August 2007 is estimated at 3,800 head, up 12 percent from August 2006. Cumulative cattle marketings for the first eight months of 2007 totaled 35,500 head, down 2 percent from the same period a year ago. ■

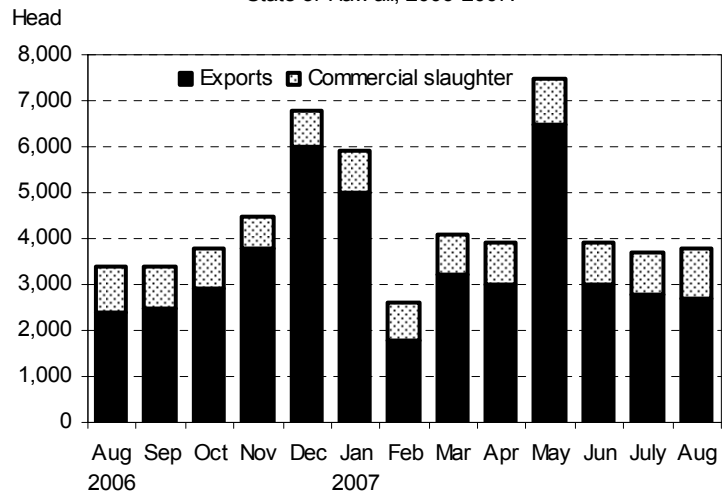
August exports up 13 percent from a year ago

Exports of steers and heifers totaled 2,700 head in August 2007, up 13 percent from a year ago. Exports of steers totaled 1,100 head during August 2007, down 31 percent compared to a year ago. Total export of heifers increased in August 2007 to 1,600 head, double the amount of heifers exported a year ago. Cumulative exports of steers and heifers through August 2007 totaled 28,100 head, down 3 percent from the same period a year ago. Cumulative exports of steers for 2007 stands at 15,800 head, down 8 percent from 2006. Exports of heifers were 2 percent ahead of a year ago for the first seven months of 2007 at 12,200 head. Exports of other classes of cattle were not included. ■

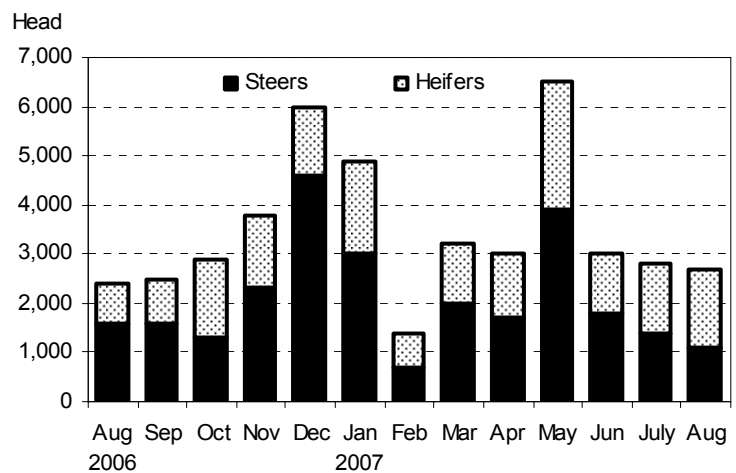
Average live weight tops 430 pounds

The average live weight of steers and heifers exported from Hawaii in August 2007 was 433 pounds, up 4 percent from August 2006's average live weight of 418 pounds. ■

Monthly Cattle Marketings: Number of head by type,
State of Hawaii, 2006-2007.



Monthly Cattle Exports: Number of head by type,
State of Hawaii, 2006-2007.



Cattle: Total marketings, exports by type, and average live weight of exports,
State of Hawaii, August 2007 and year-to-date comparison.

| Month | Total marketings ^{1/} | | Exports by type ^{2/} | | | | | | Average live weight | |
|----------------------------|--------------------------------|--------|-------------------------------|--------|---------|--------|---------------------|--------|---------------------|------|
| | | | Steers | | Heifers | | Total ^{3/} | | | |
| | 2006 | 2007 | 2006 | 2007 | 2006 | 2007 | 2006 | 2007 | 2006 | 2007 |
| August | 3,400 | 3,800 | 1,600 | 1,100 | 800 | 1,600 | 2,400 | 2,700 | 418 | 433 |
| Year-to-date ^{4/} | 36,200 | 35,500 | 17,100 | 15,800 | 12,000 | 12,200 | 29,100 | 28,100 | 409 | 429 |

^{1/} Sum of commercial slaughter and exports. Total may not add due to rounding.

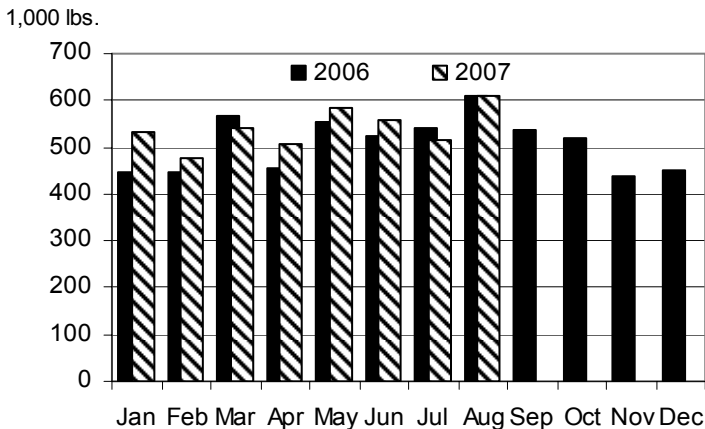
^{2/} Cattle and calves shipped out-of-State are classified as steers and heifers; all other classes of animals are not included. Annual totals for all classes of exports are available in the *Statistics of Hawaiian Agriculture* yearbook.

^{3/} Steers and heifers may not add to total due to rounding.

^{4/} Includes any revisions made to previous months.

Cattle and Hogs Commercial Slaughter

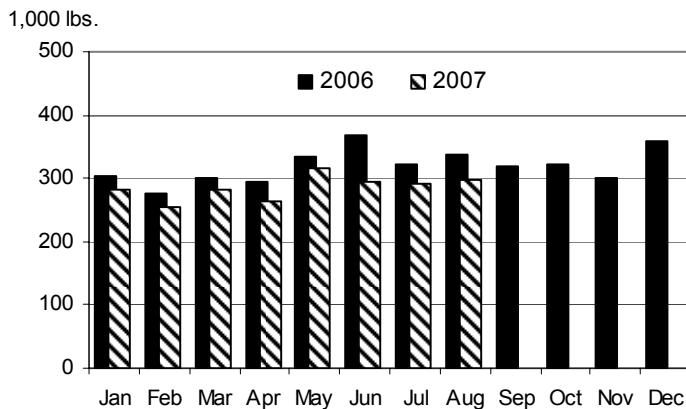
Monthly Commercial Beef Production:
Total Dress Weight, State of Hawaii, 2006 and 2007



Commercial Beef Production Down Fractionally From Year Ago

Hawaii commercial beef production (local slaughter) during August 2007 totaled 609,000 pounds, down fractionally from August 2006. Cumulative beef production (local slaughter) through August 2007 totaled 4.3 million pounds, up 4 percent from a year ago. Commercial kill totaled 1,100 head in August, up 10 percent from August 2006. Average live weight per head was 1,045 pounds in August 2007, down 6 percent from the average live weight per head in August 2006. ■

Monthly Commercial Pork Production:
Total Dress Weight, State of Hawaii, 2006 and 2007



Commercial Pork Production Down 11 Percent

Hawaii commercial pork production during August 2007 totaled 298,000 pounds, down 11 percent from August 2006. Cumulative pork production for the first eight months of 2007 totaled 2.3 million pounds, down 10 percent from a year ago. Total hog kill was 1,900 head in August 2007, down 5 percent from a year ago. Average live weight per head was 209 pounds in August 2007, down 7 percent from the 224-pound average a year ago. ■

Cattle and Hogs: Total commercial slaughter, average live weight, total live weight, And total dressed weight, State of Hawaii, August 2007 and year-to-date with comparison. ^{1/}

| Month | Total commercial slaughter | | Average live weight | | Total live weight | | Total dressed weight ^{2/} | |
|---------------------------|----------------------------|--------|---------------------|-------|--------------------------|-------|------------------------------------|-------|
| | 2006 | 2007 | 2006 | 2007 | 2006 | 2007 | 2006 | 2007 |
| Cattle | ----- number of head----- | | ----- Pounds ----- | | ----- 1,000 pounds ----- | | | |
| August | 1,000 | 1,100 | 1,106 | 1,045 | 1,112 | 1,110 | 610 | 609 |
| Year-to-date | 7,100 | 7,400 | -- | -- | 7,549 | 7,874 | 4,144 | 4,323 |
| Hogs ^{3/} | | | | | | | | |
| August | 2,000 | 1,900 | 224 | 209 | 448 | 397 | 336 | 298 |
| Year-to-date | 14,900 | 14,200 | -- | -- | 3,379 | 3,042 | 2,534 | 2,282 |

-- Not estimated.

^{1/} Excludes non-inspected farm slaughter and live cattle and calves shipped out-of-State; includes custom slaughter.

^{2/} Estimates based on 54.9 dressing percentage for cattle and 75.0 dressing percentage for hogs.

^{3/} Excludes non-inspected farm slaughter; includes custom slaughter and live hog shipments from the mainland for slaughter.



Pasture and Livestock Conditions, September 1, 2007

Hawaii County

| August Rainfall ^{1/} | | |
|-------------------------------|------|--------|
| Station | 2007 | Normal |
| Honokaa | 2.80 | 3.80 |
| Kamuela upper | 3.18 | 4.40 |
| Kahuku Ranch | 4.13 | 4.30 |
| Puu Waawaa | 2.06 | 1.80 |
| Waikii | 1.57 | 1.30 |

North Hilo, South Hilo, and Puna district pastures received beneficial showers from trade winds and from Tropical Storm Flossie. Sunny and warm days helped to boost grass growth. Feed was abundant and new grass prospects were very good. Pastures in Mt. View and Volcano were better than normal. Stock water supplies were good. High elevation pastures, at the base of Mauna Kea, did not receive adequate moisture and conditions remained poor.

Ka`u district pastures were in fair condition. Grass growth was slowed as heavy rains from Hurricane Flossie did not materialize. One day of steady showers at the beginning of the month helped to maintain fair grass supplies in the upper pastures. Prospects for new grass growth were fair. Pastures in the Wood Valley, Kapapala, and Kahuku areas were in fair condition. Grass growth and new grass prospects were average to below average.

North and South Kohala district pastures began to turn green in windward areas. Old feed supplies were low and substantial growth was needed to replenish supplies. Stock water was adequate. Leeward areas of Kohala were very dry. Some moisture in upper Kohala Mountain and the Waikii areas helped pastures to turn green. Most leeward areas remained very dry and in poor condition, especially in coastal regions.

North and South Kona district pastures in the south were in mostly good condition. Frequent convective

showers provided upper pastures with moisture. Stock water supplies were good. Northern pastures benefited from showers that occurred near Puuwaawaa and its surrounding areas. Overall, the North district was very dry and pastures were in mostly poor condition. Warm, mostly sunny conditions over coastal regions kept pastures dry with little new growth.

Hamakua district pastures in lower areas improved due to increased showers. New grass prospects also improved. Mid-elevation pastures did not receive as much moisture, but just enough to help turn pastures green. High-elevation pastures lacked adequate soil moisture as rainfall did not extend above the 2,000-ft. level. Grass supplies and new grass prospects were far below average. Water hauling was required at the higher elevations.

Maui County

| August Rainfall ^{1/} | | |
|-------------------------------|------|--------|
| Station | 2007 | Normal |
| Hana Airport | 4.37 | 5.90 |
| Pukalani | 0.08 | 0.80 |
| Ulupalakua ranch | 0.58 | 1.40 |
| Molokai Airport | 0.11 | 0.70 |

Haiku, Keokea, and over to Ulupalakua benefited from showers and had green forage. Makawao remained relatively dry except for some irrigated pastures. Kula pastures were also dry in the upper and lower elevations. Central Maui pastures continued to provide dry forage. Pastures in Maalaea have not been irrigated in some time and only provided sparse dry forage. Pastures on the upper sections of Kihei were dry, but contained a good amount of forage. Some operations have installed troughs at the lower elevations to manage grazing more efficiently. Pastures in Kahakuloa showed some re-growth, but had little improvement.

Honolulu County

| August Rainfall ^{1/} | | |
|-------------------------------|------|--------|
| Station | 2007 | Normal |
| Hakipuu mauka | 4.40 | 4.00 |
| Lualualei | 0.10 | 0.70 |
| Waimanalo | 1.24 | 1.60 |

Pastures in leeward and central areas remained very dry. A wide-reaching wildfire engulfed 6,700 acres on the North Shore and included over 2,000 acres of pasture land. New grass growth was light after scattered showers brought some moisture to the area. Stock water supplies were low, but adequate. Windward pastures were in fair condition with light rainfall keeping grass growth stable. Sunny days and warm temperatures were favorable for grass growth.

Kauai County

| August Rainfall ^{1/} | | |
|-------------------------------|------|--------|
| Station | 2007 | Normal |
| Kalaheo | 2.97 | 4.80 |
| Kapahi | 5.40 | 5.50 |
| Princeville airport | 3.45 | 4.40 |

Pasture conditions ranged from poor to good. Most pastures remained dry with very low supplies of old feed. Soil moisture was reportedly low or below average in most areas. Prospects for new grass growth were poor to fair. Yellow sugar cane aphid activity and damage were occurring in some areas, but was impeded in other areas due to a lack of grasses for the aphids to feed on. ■

^{1/} Rainfall stations were selected from the National Weather Service's Hydronet system of automated rain gages. Featured stations may vary each month. All rainfall data has not been quality controlled, and therefore is not certified by the National Weather Service. A complete listing of Hydronet stations, rainfall gage location maps, and other rainfall data may be found at the National Weather Service's hydrology homepage:

<http://www.prh.noaa.gov/hnl/pages/hydrology.php>

Milk Cows and Milk Production

August Milk Production

Down 48 Percent From Year Ago

Hawaii's dairy cows produced 2.5 million pounds of milk in August 2007, down 48 percent from a year ago. Cumulative milk production for the first eight months of 2007 totaled 26.8 million pounds, down 33 percent from the same period in 2006. ■

August's Cow Herd

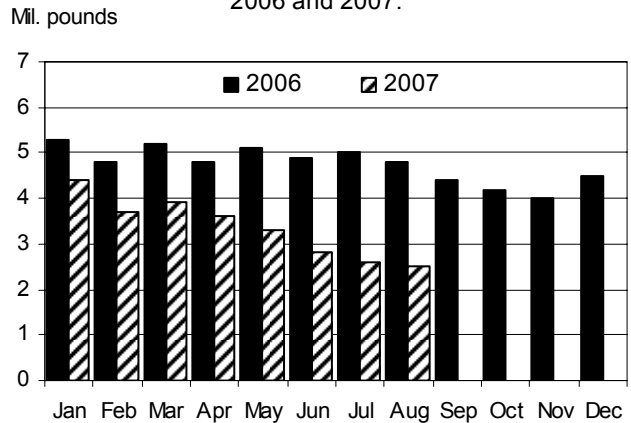
Down 36 Percent From Year Ago

Hawaii's cow herd, both dry and milking, numbered 2,700 head in August 2007, unchanged from July 2007 but down 36 percent from August 2006. ■

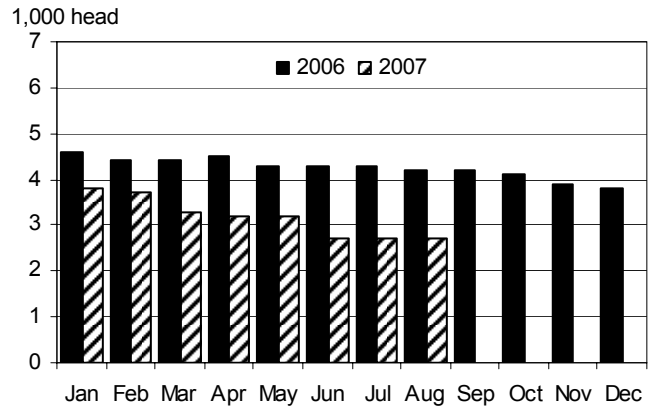
Milk Per Cow Decreases

Average milk per cow is estimated at 940 pounds for August 2007, down 18 percent from last August's average of 1,145 pounds per cow. ■

Milk: Monthly production, State of Hawaii, 2006 and 2007.



Milk: Average number of cows on hand during month, State of Hawaii, 2006 and 2007.



Milk: All milk cows, milk per cow, and total milk production, State of Hawaii, August 2007 and year-to-date with comparisons. ^{1/}

| Area | All milk cows ^{2/} | | | Milk per cow | | Milk production | | | |
|-------|-----------------------------|-----------|-----------|--------------------|-----------|--------------------------|-----------|--------------|--------|
| | Aug. 2006 | July 2007 | Aug. 2007 | Aug. 2006 | Aug. 2007 | Aug. 2006 | Aug. 2007 | Year-to-date | |
| | ----- number of head ----- | | | ----- pounds ----- | | ----- 1,000 pounds ----- | | | |
| State | 4,200 | 2,700 | 2,700 | 1,145 | 940 | 4,800 | 2,500 | 39,900 | 26,800 |

^{1/} Figures for 2007 are preliminary.

^{2/} Includes dry cows and cows on non-commercial dairy farms.



Average Farm Prices

Livestock Farm Prices Generally Higher Than Year-ago Averages

Steers and heifers

The average dress weight farm price for steers and heifers is estimated at \$1.00 per pound for August 2007, up half-a-cent from July and a penny per pound higher than a year ago.

Cows

The average dress weight farm price for cows is estimated at 54.0 cents per pound in August 2007, down a penny from July. The August average dress weight farm was identical to that of a year ago.

Market hogs

The average dress weight farm price for market hogs is estimated at \$1.25 per pound for August 2007, unchanged from July 2007. Compared to a year ago, the dressed weight for market hogs was down 4.5 cents per pound this August.

Milk

The average farm price for milk was \$29.90 per hundredweight during August 2007, unchanged from July 2007. Compared to a year ago, the August 2007 average farm price for milk was \$3.50 per hundredweight higher.

Eggs

The average farm price for a dozen eggs was 98.0 cents in August 2007, down 7.0 cents from July 2007. Compared to a year ago, the average farm price for a dozen eggs was up 4.50 cents in August 2007. ■

Livestock Commodity Farm Prices: Average farm prices for steers and heifers, cows, market hogs, milk, and eggs, State of Hawaii, August 2007 with comparisons.

| Commodity | August 2006 | July 2007 | August 2007 |
|------------------------------------|-------------|-----------|-------------|
| ----- cents per pound ----- | | | |
| Steers and heifers ^{1/} | | | |
| Dressed weight | 99.0 | 99.5 | 100.0 |
| Live weight ^{2/} | 54.4 | 54.6 | 54.9 |
| Cows ^{1/} | | | |
| Dressed weight | 54.0 | 55.0 | 54.0 |
| Live weight ^{2/} | 29.6 | 30.2 | 29.6 |
| Market hogs ^{1/} | | | |
| Dressed weight | 129.5 | 125.0 | 125.0 |
| Live weight ^{3/} | 97.1 | 93.8 | 93.8 |
| ----- dollars per 100 pounds ----- | | | |
| Milk..... | 26.40 | 29.90 | 29.90 |
| ----- cents per dozen ----- | | | |
| Eggs ^{4/} | 93.5 | 105.0 | 98.0 |

^{1/} Equivalent delivered slaughterhouse for sales in county of production and delivered shipper's dock for off-island sales.

^{2/} The average live weight price for range steers, heifers, and cows is equal to the dressed weight price multiplied by a factor of 0.549.

^{3/} The average live weight price for market hogs (includes roasters) is equal to the dressed weight price multiplied by a factor of 0.75.

^{4/} Prices are for all eggs, equivalent delivered processing plant. Preliminary prices are based on processor reports from the counties of Hawaii, Kauai, and Maui. Final prices are based on processor reports from all counties.



Commercial red meat production for the United States totaled 4.33 billion pounds in August, up 2 percent from the 4.26 billion pounds produced in August 2006.

Beef production, at 2.45 billion pounds, was slightly above the previous year. Cattle slaughter totaled 3.13 million head, down slightly from August 2006. The average live weight was up 3 pounds from the previous year, at 1,279 pounds.

Veal production totaled 10.3 million pounds, 20 percent below August a year ago. Calf slaughter totaled 65,400 head, down 2 percent from August 2006. The average live weight was down 54 pounds from last year, at 268 pounds.

Pork production totaled 1.85 billion pounds, up 4 percent from the previous year. Hog kill totaled 9.39 million head, up 3 percent from August 2006. The average live weight was up 1 pound from the previous year, at 263 pounds.

Lamb and mutton production, at 14.7 million pounds, was up 1 percent from August 2006. Sheep slaughter

totalled 227,500 head, slightly above last year. The average live weight was 129 pounds, unchanged from August a year ago.

U.S. egg production totaled 7.57 billion during August 2007, down 1 percent from last year. Production included 6.44 billion table eggs, and 1.13 billion hatching eggs, of which 1.07 billion were broiler-type and 65 million were egg-type. The total number of layers during August 2007 averaged 339 million, down 1 percent from last year. August egg production per 100 layers was 2,229 eggs, down slightly from August 2006.

All layers in the U.S. on September 1, 2007 totaled 339 million, down 1 percent from last year. The 339 million layers consisted of 281 million layers producing table or market type eggs, 55.9 million layers producing broiler-type hatching eggs, and 2.73 million layers producing egg-type hatching eggs. Rate of lay per day on September 1, 2007, averaged 71.7 eggs per 100 layers, down 1 percent from September 1, 2006. ■

Excerpts from *Livestock Slaughter* (September 21, 2007) and *Chickens and Eggs* (September 21, 2007) releases.



The Economics of Food, Farming, Natural Resources, and Rural America

Beef/cattle: Weather is still the dominant feature in the cattle/beef industry landscape. Some precipitation fell in the Southwest, Southeast, and Corn Belt, providing some relief for grain and hay crops and pastures. However, hay and other supplemental feeding continues in these areas, and beef cows continue to be sold as a result.

Pork/hogs: The fourth quarter pork export forecast was raised by 60 million pounds, following an announcement by a major U.S. packer of a sales agreement with China, to take place by December 2007. Total U.S. pork exports in 2007 are expected to be 2.97 billion pounds, about 0.8 percent lower than in 2006. U.S. pork exports next year are expected to be almost 3.1 billion pounds, or 3.8 percent above 2007. July 2007 exports to China and Hong Kong, combined, offset year-over-year declines in shipments to major U.S. foreign pork markets. Second-half production is expected to be about 11.1 billion pounds, about 3.4 percent above a

year earlier, with live equivalent prices of 51-52 percent lean hogs expected to average between \$50 and \$51 per cwt in the third quarter, and \$45 and \$47 per hundredweight (cwt) in the fourth quarter. Commercial pork production next year is expected to be about 22.1 billion pounds, about 100 million pounds larger than forecast last month. The increased production forecast largely reflects revised expectations for U.S. swine imports from Canada, both in the second half of 2007 and in 2008.

Dairy: Domestic demand for dairy products, especially cheese, combined with global demand and tight world supplies, will keep milk and dairy product prices high this year and next. The upturn in milk production will moderate 2008 prices somewhat compared with 2007.

Poultry: Broiler meat production continues to slowly expand. The slow expansion and strengthening exports have allowed prices for most broiler products to remain



U.S. Livestock Roundup (continued)

considerably higher than in the previous year. The generally higher prices are expected to continue through the second half of 2007 and into 2008. Although turkey production and stocks of whole birds have been above a year earlier, prices for whole turkeys are expected to remain higher than the previous year through the third quarter. With a small laying flock and a

strong export market, egg prices are expected to range from \$1.14 to \$1.15 per dozen at the wholesale level in the third quarter and to continue higher than the previous year in the fourth quarter. ■

Excerpt from *Livestock, Dairy, & Poultry Outlook/LDP-M-159*/September 20, 2007 Economic Research Service, USDA.

U.S. Department of Agriculture
NASS, Hawaii Field Office
1428 South King Street
Honolulu, HI 96814-2512

OFFICIAL BUSINESS
PENALTY FOR PRIVATE USE, \$300

RETURN SERVICE REQUESTED

PRESORTED STANDARD
Postage and Fees Paid
NATIONAL AGRICULTURAL
STATISTICS SERVICE
Permit No. G-38