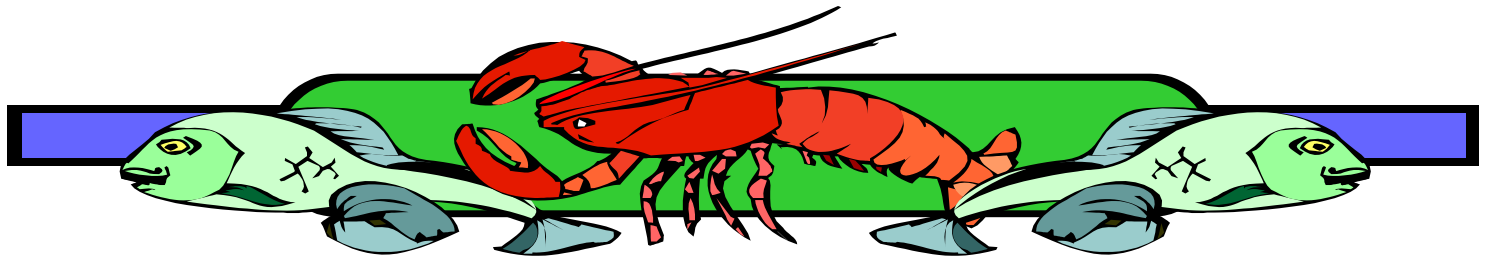


HAWAII AQUACULTURE



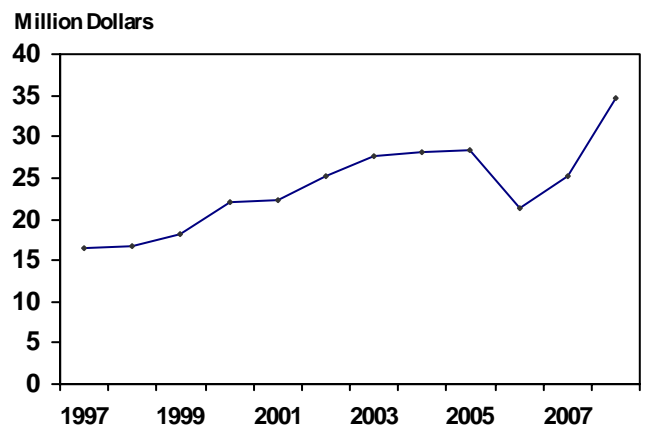
Frequency: Annual

Release: August 18, 2009

HAWAII AQUACULTURE REACHES RECORD 34.7 MILLION

Hawaii grown aquaculture reached a record \$34.7 million in 2008, increasing 38 percent from 2007. Algae sales accounted for 45 percent of the value and amounted to \$15.7 million. Finfish sales by weight valued at \$7.0 million, comprised 20 percent of the total. The ornamental category was pegged at \$3.3 million or 10 percent of the total. The 'other' category includes seed stock, brood stock, and other items counted by number, accounted for 24 percent or \$8.3 million. Hawaii County continued to lead the State in aquaculture sales with \$27.8 million or 80 percent of the total value. Sales from Honolulu, Kauai and Maui Counties accounted for the remaining 20 percent.

Hawaii Aquaculture: Value, State of Hawaii, 1997-2008



National Agricultural Statistics Service
USDA, Hawaii Field Office

1428 South King Street
Honolulu, Hawaii 96814-2512
PH (808) 973-9588 FAX: (808) 973-2909
Internet address:
<http://www.nass.usda.gov/hi/speccrop/aqua.pdf>

Mark E. Hudson

Director

King Whetstone

Deputy Director

Regina Hidano

Agricultural Statistician

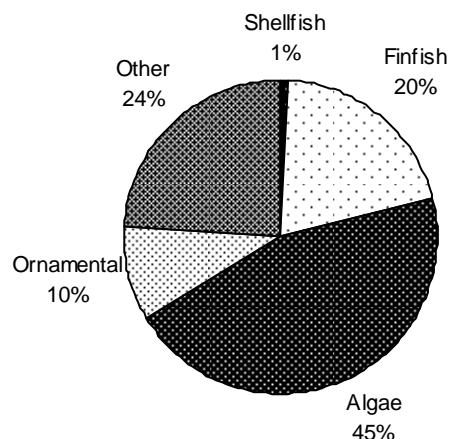
Joyce Jay

Statistical Assistant

Contributing:

David Mattice - Hawaii County
Sara Kamibayashi - Hawaii County
June Okamura - Honolulu County &
Kauai County
Naomi Landgraf - Maui County

Aquaculture: Percent of Total Sales, State of Hawaii, 2008



AQUACULTURE: Number of Operations, Production, and Value, by Counties, 2004 - 2008

Year	Operations	Production		Value					
		Shellfish	Finfish	Shellfish	Finfish	Algae	Ornamental	Other ¹	Total
	<i>Number</i>	<i>----- 1,000 pounds -----</i>		<i>----- 1,000 dollars -----</i>					
State									
2004	100	956	484	8,326	1,975	12,602	520	4,677	28,100
2005	70	²	²	²	²	14,637	²	²	28,398
2006	80	180	426	2,351	2,388	11,914	345	4,259	21,257
2007	70	65	533	520	4,583	10,941	2,424	6,642	25,110
2008	70	32	1,311	261	7,022	15,740	3,346	8,281	34,650
Counties:									
Hawaii									
2004	39	450	³	5,593	³	11,702	³	³	21,211
2005	25	²	²	²	²	³	²	²	20,179
2006	25	103	³	1,834	³	³	³	³	17,470
2007	25	³	³	³	³	³	³	³	20,013
2008	35	3	3	3	3	3	3	3	27,836
Honolulu/Kauai/Maui									
2004	61	506	³	2,733	³	900	³	³	6,889
2005	45	²	²	²	²	³	²	²	8,219
2006	55	77	³	517	³	³	³	³	3,787
2007	45	³	³	³	³	³	³	³	5,097
2008	35	3	3	3	3	3	3	3	6,814

¹ Includes seed stock, brood stock, and items not sold by weight which includes number count. ² 2005 Census of Aquaculture breakout of categories was not available to avoid disclosure of individual operations with other States. ³ Data not shown separately to avoid disclosure of individual operations but combined and included in the State total.

U.S. Department of Agriculture
 NASS, Hawaii Field Office
 1428 South King Street
 Honolulu, Hawaii 96814-2512

OFFICIAL BUSINESS
 PENALTY FOR PRIVATE USE, \$300

RETURN SERVICE REQUESTED